

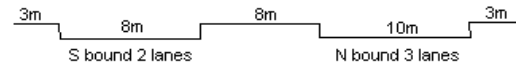
YEAR 2023

COVERAGE (B) STATION 4212

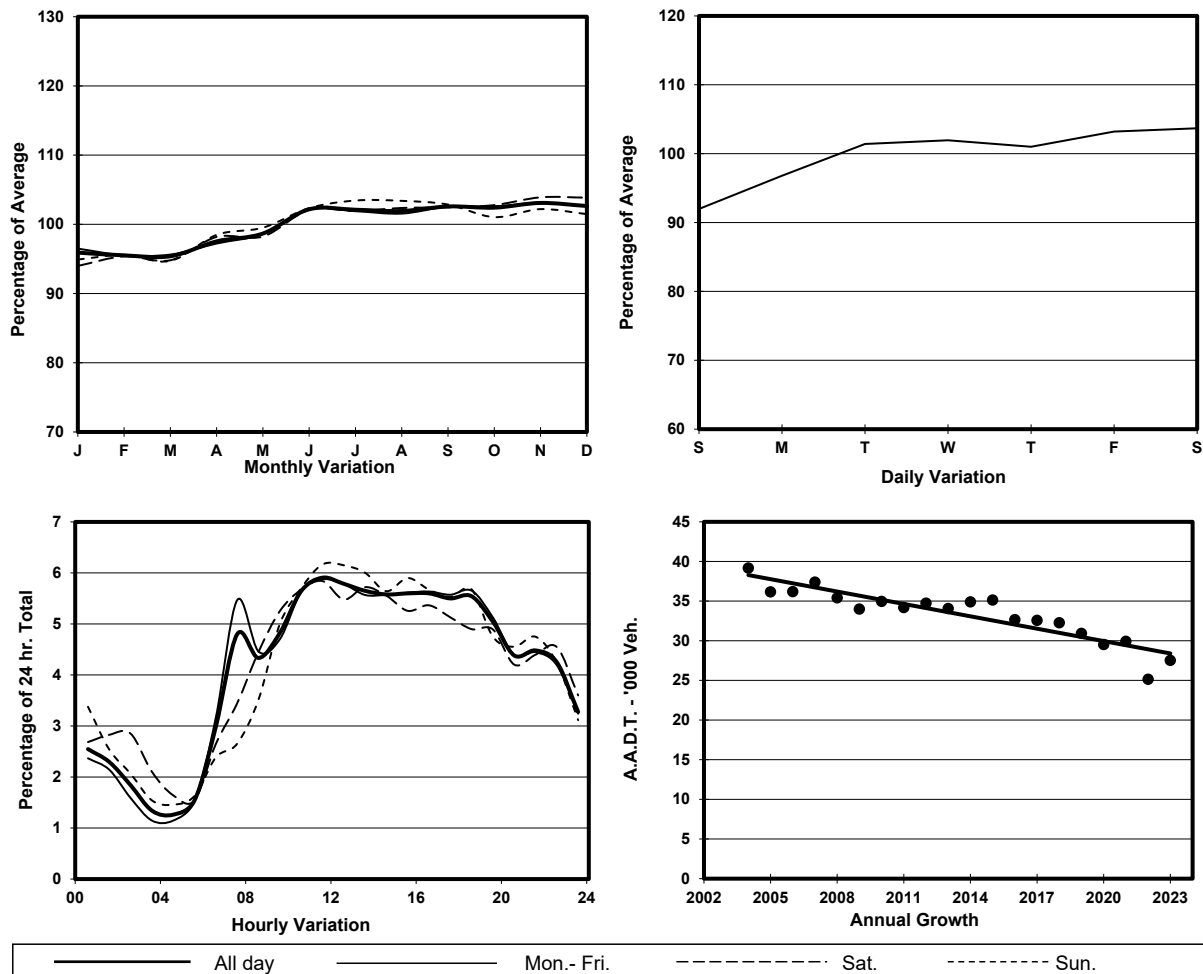
ROAD NETWORK MAJOR

ROAD TYPE PRIMARY DISTRIBUTOR

LINK CHATHAM RD N & MA TAU WAI RD (from SAN LAU ST to CHI KIANG ST)



1. TRAFFIC FLOW VARIATION AND GROWTH



2. TRAFFIC CHARACTERISTICS (BY DIRECTION)

| Parameter | All - Day | Mon. - Fri. | Sat. | Sun. |
|--------------------------------------|-----------|-------------|-----------|-----------|
| SOUTH BOUND | | | | |
| A.A.D.T. | 11720 | 11520 | 12350 | 12440 |
| R 12 / 24 - % | 62 | 62.1 | 60.1 | 63.5 |
| R 16 / 24 - % | 81.3 | 81.6 | 79.4 | 81.4 |
| AM Peak Hour | 0700-0800 | 0700-0800 | 0900-1000 | 0900-1000 |
| One-way flow at AM peak hour | 590 | 690 | 720 | 660 |
| T - % (AM) | - | 14.5 | - | - |
| PM Peak Hour | 1800-1900 | 1800-1900 | 1800-1900 | 1600-1700 |
| One-way flow at PM peak hour | 600 | 580 | 630 | 680 |
| T - % (PM) | - | 10.6 | - | - |
| Prop.of commercial vehicles - 16 hr. | - | 13.1 | - | - |
| NORTH BOUND | | | | |
| A.A.D.T. | 15800 | 16320 | 16190 | 13240 |
| R 12 / 24 - % | 66.8 | 67.9 | 63.6 | 63.7 |
| R 16 / 24 - % | 84.2 | 85.1 | 80.7 | 82.4 |
| AM Peak Hour | 0900-1000 | 0700-0800 | 0900-1000 | 0900-1000 |
| One-way flow at AM peak hour | 770 | 830 | 780 | 620 |
| T - % (AM) | - | 17.6 | - | - |
| PM Peak Hour | 1600-1700 | 1600-1700 | 1600-1700 | 1800-1900 |
| One-way flow at PM peak hour | 960 | 1020 | 920 | 800 |
| T - % (PM) | - | 13 | - | - |
| Prop.of commercial vehicles - 16 hr. | - | 15.1 | - | - |

3. OTHER INFORMATION AND COMMENT

4. Vehicle classification and occupancy - Monday to Friday

| Time | | Class of vehicle | | | | | | | | | |
|------------------------|-----|------------------|----------------|------|---------------|------|------------|-------|----------------|---------|------|
| | | Motor Cycle | Private Car | Taxi | Private LB | PLB | Goods veh. | | Non Fr. Bus | Fr. Bus | |
| | | | | | | | Light | M & H | | SD | DD |
| 0700-0800 | Pro | 5.9 | 30.5 | 21.8 | 2.8 | 4.4 | 18.3 | 2.2 | 4.4 | 0.0 | 9.9 |
| | Ocp | 1.2 | 1.4 | 1.8 | 10.6 | 9.9 | 1.3 | 1.1 | 16.4 | 0.0 | 38.5 |
| 0800-0900 | Pro | 5.3 | 37.6 | 13.9 | 2.0 | 3.6 | 15.2 | 7.6 | 3.6 | 0.0 | 11.3 |
| | Ocp | 1.1 | 1.4 | 1.9 | 5.3 | 9.4 | 1.7 | 1.7 | 9.8 | 0.0 | 37.3 |
| 0900-1000 | Pro | 6.2 | 30.3 | 21.3 | 0.7 | 3.1 | 21.7 | 3.1 | 2.4 | 0.0 | 11.2 |
| | Ocp | 1.2 | 1.3 | 1.7 | 1.5 | 7.2 | 1.5 | 1.6 | 8.0 | 0.0 | 24.2 |
| 1000-1100 | Pro | 4.4 | 30.4 | 26.5 | 0.8 | 2.5 | 22.4 | 2.8 | 2.2 | 0.0 | 8.0 |
| | Ocp | 1.2 | 1.3 | 1.6 | 4.3 | 11.2 | 1.5 | 1.2 | 7.0 | 0.0 | 22.7 |
| 1100-1200 Peak hour | Pro | 4.7 | 29.4 | 22.1 | 1.5 | 2.6 | 26.2 | 3.8 | 0.9 | 0.0 | 8.8 |
| | Ocp | 1.0 | 1.3 | 1.9 | 2.2 | 8.3 | 1.5 | 1.4 | 1.0 | 0.0 | 23.7 |
| 1200-1300 | Pro | 6.1 | 30.6 | 23.5 | 1.1 | 3.4 | 21.6 | 2.9 | 2.9 | 0.0 | 8.0 |
| | Ocp | 1.0 | 1.5 | 1.7 | 3.8 | 8.0 | 1.4 | 1.0 | 16.4 | 0.0 | 20.9 |
| 1300-1400 | Pro | 4.5 | 36.4 | 19.3 | 1.1 | 1.4 | 22.1 | 5.0 | 1.1 | 0.0 | 8.9 |
| | Ocp | 1.0 | 1.4 | 1.7 | 1.8 | 6.8 | 1.5 | 1.3 | 14.8 | 0.0 | 22.3 |
| 1400-1500 | Pro | 6.2 | 36.0 | 17.6 | 1.8 | 1.2 | 23.7 | 1.8 | 2.1 | 0.0 | 9.8 |
| | Ocp | 1.1 | 1.5 | 2.2 | 2.0 | 13.3 | 1.6 | 1.2 | 5.6 | 0.0 | 22.1 |
| 1500-1600 | Pro | 6.2 | 34.1 | 20.4 | 1.7 | 1.7 | 22.2 | 3.0 | 2.5 | 0.1 | 8.1 |
| | Ocp | 1.0 | 1.4 | 1.9 | 7.4 | 8.7 | 1.5 | 1.3 | 6.8 | 2.0 | 25.7 |
| 1600-1700 | Pro | 4.6 | 42.6 | 20.5 | 2.2 | 2.2 | 13.1 | 2.2 | 2.7 | 0.0 | 10.0 |
| | Ocp | 1.2 | 1.4 | 1.8 | 2.8 | 9.3 | 1.7 | 1.4 | 8.9 | 0.0 | 30.7 |
| 1700-1800 | Pro | 8.6 | 36.3 | 22.4 | 1.6 | 3.1 | 13.6 | 2.3 | 2.1 | 0.0 | 10.0 |
| | Ocp | 1.2 | 1.5 | 1.9 | 1.7 | 8.8 | 1.4 | 1.0 | 7.4 | 0.0 | 38.5 |
| 1800-1900 | Pro | 8.3 | 51.4 | 13.6 | 0.0 | 3.0 | 8.6 | 1.8 | 1.8 | 0.0 | 11.7 |
| | Ocp | 1.1 | 1.4 | 2.3 | 0.0 | 16.6 | 1.5 | 1.0 | 10.3 | 0.0 | 46.9 |
| 1900-2000 | Pro | 5.6 | 48.4 | 25.6 | 0.0 | 2.6 | 6.2 | 1.3 | 0.5 | 0.0 | 9.8 |
| | Ocp | 1.1 | 1.4 | 1.9 | 0.0 | 11.2 | 1.3 | 1.2 | 13.5 | 0.0 | 34.9 |
| 2000-2100 | Pro | 6.3 | 40.7 | 28.1 | 0.3 | 3.4 | 9.1 | 1.3 | 0.9 | 0.0 | 9.9 |
| | Ocp | 1.0 | 1.5 | 1.9 | 3.0 | 10.0 | 1.4 | 1.0 | 1.3 | 0.0 | 27.2 |
| 2100-2200 | Pro | 7.6 | 36.3 | 33.1 | 0.3 | 3.5 | 7.0 | 1.9 | 0.6 | 0.0 | 9.6 |
| | Ocp | 1.0 | 1.3 | 1.7 | 1.0 | 7.1 | 1.1 | 1.2 | 9.5 | 0.0 | 29.0 |
| 2200-2300 | Pro | 9.2 | 37.3 | 32.5 | 0.7 | 3.1 | 5.1 | 1.7 | 0.3 | 0.0 | 10.2 |
| | Ocp | 1.0 | 1.5 | 1.9 | 2.0 | 7.3 | 1.1 | 1.0 | 1.0 | 0.0 | 25.3 |
| 16 hours | Pro | 6.2 | 36.8 | 22.6 | 1.2 | 2.8 | 16.1 | 2.8 | 1.9 | 0.1 | 9.6 |
| | Ocp | 1.1 | 1.4 | 1.8 | 4.4 | 9.5 | 1.5 | 1.3 | 9.9 | 2.0 | 29.9 |

Legend: Pro. Proportion of vehicles in % (Sum may not add up to 100% due to figure rounding)*

Ocp. Average occupancy of vehicles including both driver and passengers*

M&H Medium and Heavy

* All traffic data are collected from combined bounds